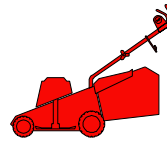


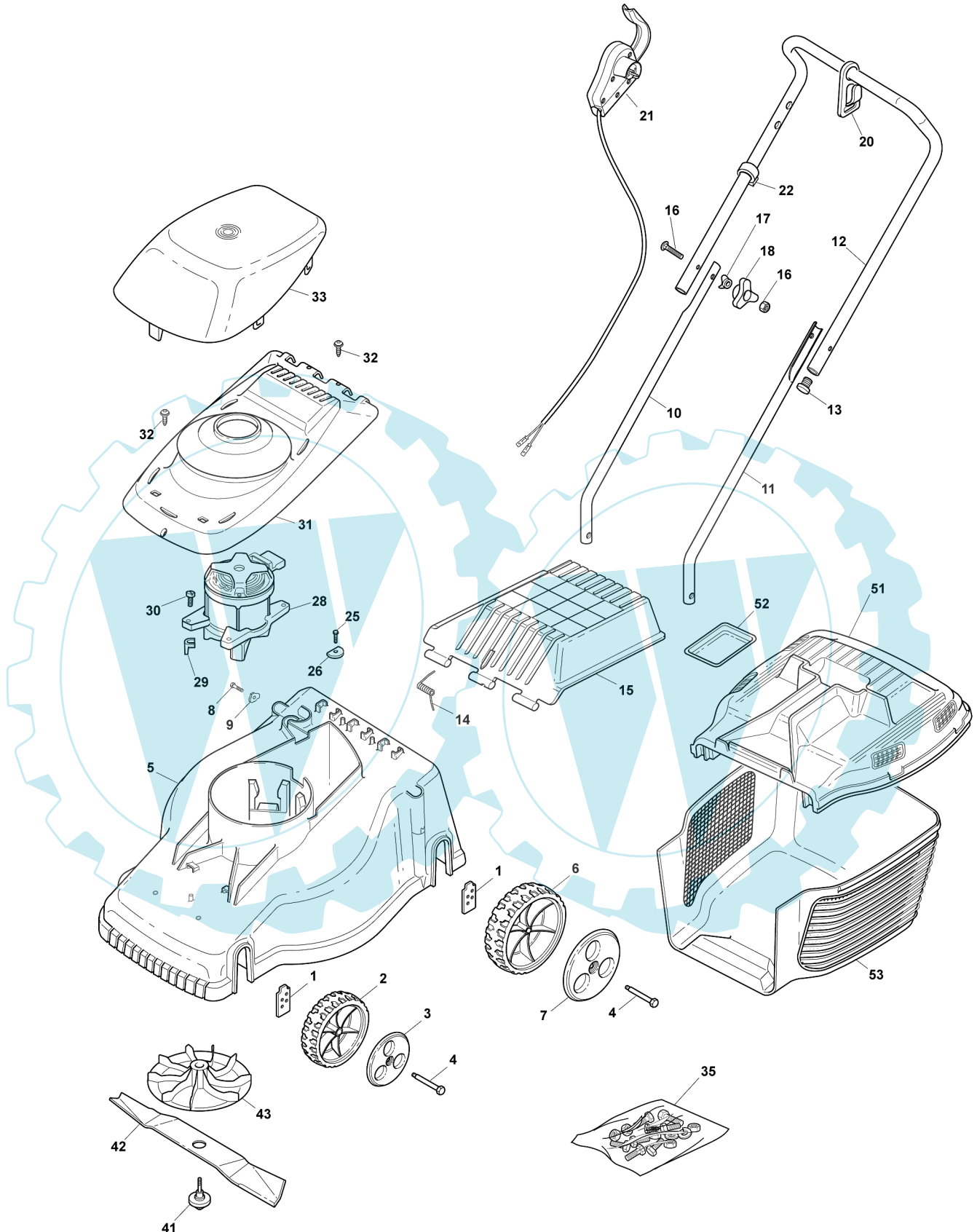
EP 350



2007

151.0

1 / 2



| POS. | CODE | Q.TY | DESCRIZIONE | DESCRIPTION | DESCRIPTION | BESCHREIBUNG | REMARKS |
|------|------------|------|-------------------|----------------|--------------------|----------------|---------|
| 1 | 22785162/0 | 4 | SUPPORTO RUOTA | SUPPORT, WHEEL | SUPPORT ROUE | HALTER, RAD | |
| 2 | 22686089/0 | 2 | RUOTA Ø 130 | WHEEL Ø 130 | ROUE Ø 130 | RAD Ø 130 | |
| 3 | 22110422/0 | 2 | COPRIMOZZO BIANCO | HUB CAP WHITE | COUVRE-MOYEU BLANC | RADKAPPE WEIBE | |
| - | 22110426/0 | 2 | COPRIMOZZO GIALLO | HUB CAP YELLOW | COUVRE-MOYEU JAUNE | RADKAPPE GELBE | |

| POS. | CODE | Q.TY | DESCRIZIONE | DESCRIPTION | DESCRIPTION | BESCHREIBUNG | REMARKS |
|------|------------|------|----------------------|-----------------------|--------------------------------|------------------------|-------------------|
| 3 | 22110424/0 | 2 | COPRIMOZZO ROSSO | HUB CAP RED | COUVRE-MOYEU ROUGE | RADKAPPE ROTE | |
| 4 | 22524339/0 | 4 | PERNO | PIN | PIVOT | BOLZEN | |
| 5 | 81003535/0 | 1 | CHASSIS ROSSO | DECK RED | CHÂSSIS ROUGE | GEHÄUSE ROT | |
| 6 | 22686090/0 | 2 | RUOTA Ø 160 | WHEEL Ø 160 | ROUE Ø 160 | RAD Ø 160 | |
| 7 | 22110423/0 | 2 | COPRIMOZZO BIANCO | HUB CAP WHITE | COUVRE-MOYEU BLANC | RADKAPPE WEIßE | |
| - | 22110427/0 | 2 | COPRIMOZZO GIALLO | HUB CAP YELLOW | COUVRE-MOYEU JAUNE | RADKAPPE GELBE | |
| - | 22110425/0 | 2 | COPRIMOZZO ROSSO | HUB CAP RED | COUVRE-MOYEU ROUGE | RADKAPPE ROTE | |
| 8 | 12728450/0 | 2 | VITE | SCREW | VIS | SCHRAUBE | |
| 9 | 22545135/0 | 2 | PIASTRINA | PLATE | PLAQUETTE | PLÄTTCHEN | |
| 10 | 81006939/1 | 1 | MANICO, PARTE INF DX | HANDLE, R LOWER PART | MANCHERON, PARTIE INFERIEURE D | HOLM, RECHTE UNTERTEIL | |
| 11 | 81006940/1 | 1 | MANICO, PARTE INF SX | HANDLE, L LOWER PART | MANCHERON, PARTIE INFERIEURE G | HOLM, LINKE UNTERTEIL | |
| 12 | 81006941/4 | 1 | MANICO, PARTE SUP | HANDLE, UPPER PART | MANCHERON, PARTIE SUPERIEURE | HOLM, OBERTEIL | |
| 13 | 18566112/0 | 2 | PUNTALE | CAP | BOUCHON | GUMMISTOPFEN | |
| 14 | 22450435/0 | 1 | MOLLA | SPRING | RESSORT | FEDER | |
| 15 | 22600123/0 | 1 | PROTEZIONE | PROTECTION | PROTECTION | SCHUTZ | |
| 16 | 12819120/0 | 2 | VITE | SCREW | VIS | SCHRAUBE | |
| 17 | 22680006/1 | 2 | ROSETTA | WASHER | RONDELLE | SCHEIBE | |
| 18 | 22399900/0 | 2 | MANOPOLINA | KNOB | POIGNÉE | GRIF | |
| 20 | 22195101/4 | 1 | FERMACAVO | FAIRLEAD | FIXATION CABLE | KABELBEFESTIGUNG | |
| 21 | - | 1 | SALVAMOTORE | DEAD HAND SWITCH | INT. MAIN MORTE | TOT MANSCHALTER | (SEE ENCLOSURE 3) |
| 22 | 22192000/1 | 1 | FASCETTA | CLAMP | COLLIER | BOWDENZUGHALTER | |
| 25 | 12728099/1 | 1 | VITE | SCREW | VIS | SCHRAUBE | |
| 26 | 22680010/0 | 1 | RONDELLA | WASHER | RONDELLE | SCHEIBE | |
| 28 | 18563652/0 | 1 | MOTORE | MOTOR | MOTEUR | MOTOR | (ATB 230-240V) |
| - | 18563648/0 | 1 | MOTORE | MOTOR | MOTEUR | MOTOR | (LEO 230-240V) |
| 29 | 22167700/0 | 4 | DISTANZIALE | SPACER | ENTRETOISE | DISTANZRING | |
| 30 | 12735410/0 | 4 | VITE | SCREW | VIS | SCHRAUBE | |
| 31 | 22785154/0 | 1 | SUPPORTO CAPOTTINA | SUPPORT, COVER | SUPPORT CAPOT | HALTER, HAUBE | |
| 32 | 12728700/0 | 3 | VITE | SCREW | VIS | SCHRAUBE | |
| 33 | 22055092/0 | 1 | CAPOTTINA | COVER | CAPOT | HAUBE | |
| 35 | 81008678/0 | 1 | DOTAZIONE VITERIA | OUTFIT, SCREWS | DOTATION VISSERIE | SATZ, SCHRAUBEN | |
| 41 | 81004352/0 | 1 | VITE | SCREW | VIS | SCHRAUBE | |
| 42 | 81004127/0 | 1 | COLTELLO | BLADE | LAME | MESSER | |
| 43 | 22465602/0 | 1 | MOZZO GIRANTE | HUB FAN | MOYEU VENTILATEUR | LÄUFENDENABE | |
| 51 | 22486148/0 | 1 | SACCO, PARTE SUP | GRASS-BOX, UPPER PART | SAC, PARTIE SUPERIEURE | KORB, OBERTEIL | |
| 52 | 22486098/0 | 1 | PIASTRINA | PLATE | PLAQUETTE | PLÄTTCHEN | |
| 53 | 22486146/0 | 1 | SACCO, PARTE INF | GRASS-BOX, LOWER PART | SAC, PARTIE INFERIEURE | KORB, UNTERTEIL | |